



**STG  
HOTEL**  
OXFORD STREET





## Room One

---

This Business Lounge set-up is great for private meetings and brainstorming sessions. It is ideal for C-suite executives and directors who need a comfortable and intimate setting to discuss important matters.

---

### Capacities

- 40 Theatre
- 06 Boardroom
- 10 Business Lounge
- 20 U-Shape
- 20 Classroom
- 18 Cabaret

### Features

- Size  
37.6 sq m
- Dimensions (m)  
7.8 x 4.8 x 2.2





## Room Two

---

The lively, art deco-inspired wallpaper in Room 2 is sure to stimulate attendees and boost participation.

---

### Capacities

- 40 *Theatre*
- 18 *Cabaret*
- 20 *Classroom*
- 18 *U-Shape*

### Features

- Size  
43.7 sq m
- Dimensions (m)  
7.8 x 5.6 x 2.2

Scan for website



## Room Three

---

Featuring an Asian-inspired decor, the calm and serene ambience of Room 3 will help your delegates stay focused.

---

### Capacities

- 50 *Theatre*
- 24 *Boardroom*
- 25 *U-Shape*
- 24 *Classroom*
- 24 *Cabaret*

### Features

- Size  
*51 sq m*
  
- Dimensions (m)  
*10 x 5 x 2.2*



Scan for website





## Room Four

---

Our nature-themed wallpaper in Room 4 creates a refreshing atmosphere to optimise productivity and decision-making.

---

### Capacities

08 *Boardroom*

### Features

Size  
13.8 sq m

Dimensions (m)  
4.9 x 2.9 x 2.2



Scan for website





## Room Five

Showcasing a countryside-themed wallpaper that provides an expansive view, Room 5 offers the ideal setting to captivate your delegates' attention during your presentation. Additionally, the backdrop is perfect for hosting a banquet and awards ceremony.

### Capacities

- 100 Theatre
- 28 Boardroom
- 35 U-Shape
- 42 Classroom
- 90 Banquet
- 50 Cabaret

### Features

- Size  
102.2 sq m
- Dimensions (m)  
14.6 x 7 x 2.14

Scan for website





## Room Six

This meeting room combines simplicity with a picturesque view of the English countryside with its nature-themed wallpaper. Ideal for presentations and meetings that require complete focus.

### Capacities

- 95 Theatre
- 28 Boardroom
- 32 Classroom
- 30 U-Shape
- 32 Cabaret

### Features

- Size  
73 sq m
- Dimensions (m)  
14.6 x 5 x 2.14



Scan for website





## Room Five & Six Combo

When combined, Rooms 5 & 6 create an atmosphere that is sure to captivate your delegates and help keep them engaged – whether for trainings, banquets, awards ceremonies or presentations.

### Capacities

- 200 *Theatre*
- 90 *Cabaret*
- 72 *Classroom*
- 180 *Banquet*

### Features

- Size  
175.2 sq m
- Dimensions (m)  
14.6 x 12 x 2.14



Scan for website





## MEET IN CENTRAL LONDON

---

### Innovative audio-visual equipment

- *Interactive touch screen with built-in whiteboard (rooms 1-4)*
  - *Apps available, including a browser and an email*
  - *Access and run presentation from cloud storage, memory sticks and laptops*
  - *LED projectors with new wider electric tensile screens (rooms 5-6) Repeater monitors in 5 & 6 when booked as one room*
- 

### Amenities & Services

- *Fast Wifi*
- *Direct dial telephone*
- *Computer point*
- *Air-conditioning*
- *Lockable rooms*
- *Flexible meeting rooms for all sizes & groups*
- *Rooms 5 & 6 feature moveable partitions*



Scan for website



**Day Delegate  
Rate from £69**  
per person inc.  
VAT (minimum  
10 people)



**Flexible meeting rooms**  
for groups of all sizes.  
**Rooms 5 & 6 feature  
moveable partitions,**  
allowing the space to be  
easily combined or  
divided to suit your event.

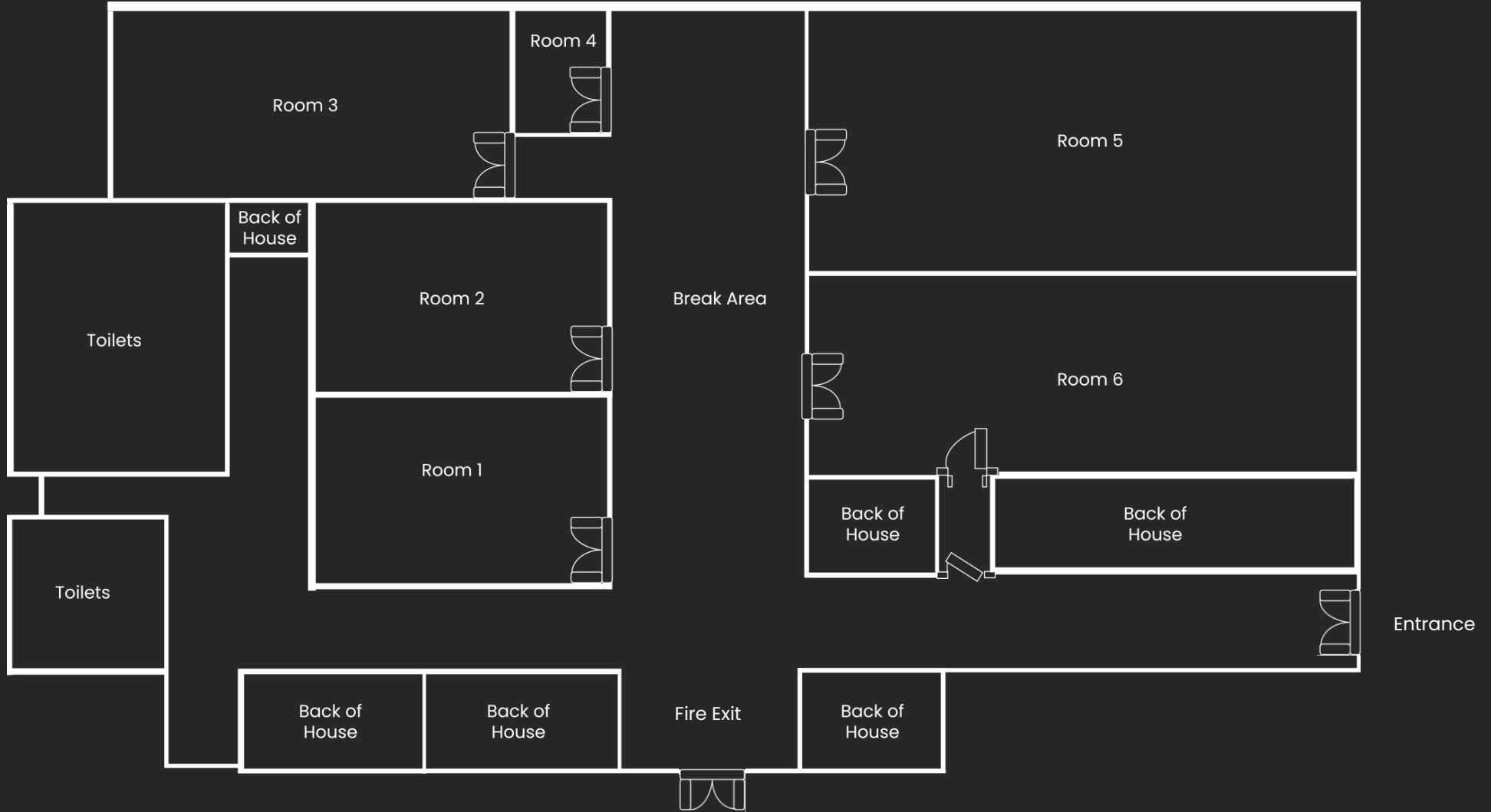
## FUNCTION ROOMS CAPACITY & SIZES

(maximum number of delegates per set up per room)

	Room 1	Room 2	Room 3	Room 4	Room 5 (with columns)	Room 6	Room 5 & 6 (with columns)
Threatre Style	40	40	50	-	100	95	200
Boardroom	16	16	24	8	28	28	-
U - Shape	18	18	25	-	35	30	-
Classroom	20	20	24	-	42	32	72
Banquet	-	-	-	-	90	60	180
Cabaret	18	18	24	-	50	32	90
Length (m)	7.8	7.8	10	4.9	14.6	14.6	14.6
Width (m)	4.8	5.6	5	2.9	7	5	12
Height (m)	2.2	2.2	2.2	2.2	2.14	2.14	2.14
Square Meters	37.6	43.7	51	13.8	102.2	73	175.2



# FLOOR PLAN





STG HOTEL OXFORD STREET TEAM

**MEETINGS & EVENTS**

*lconference@stghotel.com*

*+44 (0) 20 4572 0393*





12 Bedford Ave, London WC1B 3GH